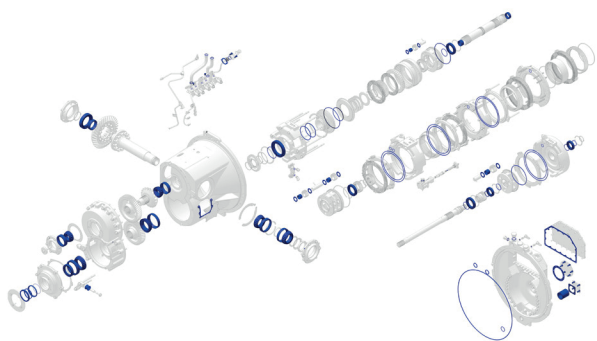


# D6T Transmission Repair Options



## PLANNED/PROBLEM INDICATORS

- Component hours
- Transmission oil leak
- S•O•S<sup>SM</sup> Report
- Clutch slippage
- Shift hesitation
- Transmission oil overheating
- Material in magnetic screens
- Material in oil filter (metallic and non-metallic)
  - Cut open and inspect
- Another failure on same oil system
- Machine down for other work

## INCLUDES

### NEW PARTS INSTALLED

- All bushings and anti-friction bearings
- All seals and gaskets
- Thrust washers
- Miscellaneous hardware (as needed)
- Transmission oil and filter change

## INSPECT

- Clutch discs and plates
- Gears
- Shafts
- Clutch pistons
- Clutch housings
- Planet carriers
- Operational test

\$

## BUILT FOR IT.

| LEVEL 2 ADD-ONS - Salvage or Replace | Estimated Price |
|--------------------------------------|-----------------|
| Clutch discs                         | \$              |
| Clutch plates                        | \$              |
| Planet gears                         | \$              |
| Sun gears                            | \$              |
| Ring gears                           | \$              |
| Planet shafts                        | \$              |
| Main shafts                          | \$              |
| Clutch pistons                       | \$              |
| Clutch housings                      | \$              |
| Planet carriers                      | \$              |
| Case repairs                         | \$              |

Warranty

Customer Name

Contact Phone No.

Date

Model

Serial No.

Total Estimated Price

Sales Person

Contact Phone No.

Turn Around Time

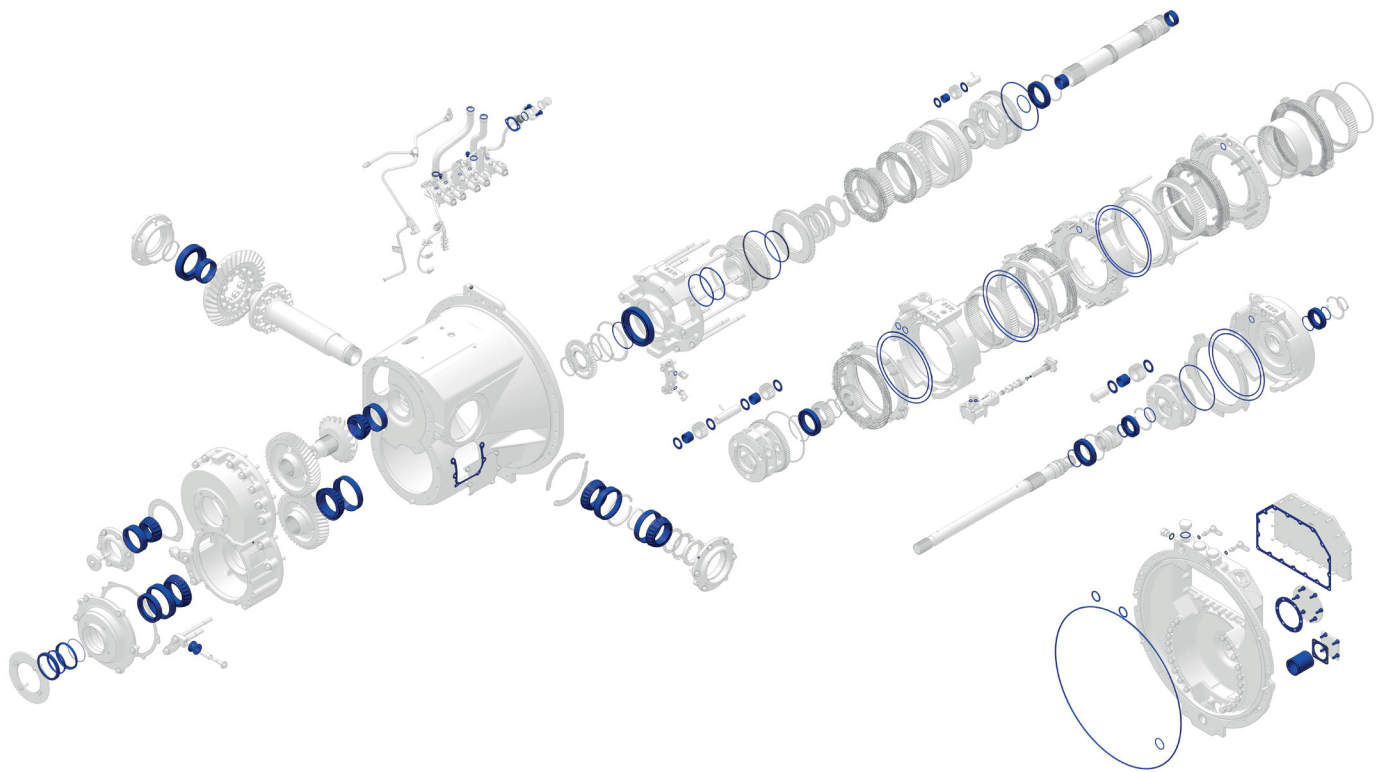
(SMCS code 02A for Level 1, 02B for Level 2)

[www.macorpcat.com](http://www.macorpcat.com)

© 2015 Caterpillar • All Rights Reserved • Printed in USA

CAT, CATERPILLAR, BUILT FOR IT, their respective logos, "Caterpillar Yellow," the "Power Edge" trade dress as well as corporate and product identity used herein, are trademarks of Caterpillar and may not be used without permission.

**MACORP** **CAT**



[www.macorpcat.com](http://www.macorpcat.com)

© 2015 Caterpillar • All Rights Reserved • Printed in USA

CAT, CATERPILLAR, BUILT FOR IT, their respective logos, "Caterpillar Yellow," the "Power Edge" trade dress as well as corporate and product identity used herein, are trademarks of Caterpillar and may not be used without permission.

