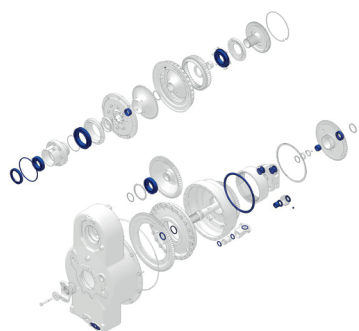


# D6T Torque Converter/ Divider Repair Options



## PLANNED/PROBLEM INDICATORS

- Component hours
- Transmission/Torque Converter oil leak
- S•O•S<sup>SM</sup> Report
- Transmission oil overheating
- Material in magnetic screens
- Material in oil filter (metallic and non-metallic)
  - Cut open and inspect
- Another failure on same oil system
- Machine down for other work

## INCLUDES

### NEW PARTS INSTALLED

- All bushings and anti-friction bearings
- All seals and gaskets
- Miscellaneous hardware (as needed)
- Thrust washers

## INSPECT

- Impeller
- Turbine
- Stator
- Gears
- Shafts
- Planet carrier
- Operational test

\$

## BUILT FOR IT.

LEVEL 2 ADD-ONS - Salvage or Replace	Estimated Price
Impeller	\$
Turbine	\$
Stator	\$
Main shafts	\$
Planet gears	\$
Ring gear	\$
Sun gear	\$
Planet shafts	\$
Planet carrier	\$
Case repairs	\$

Warranty

Customer Name

Contact Phone No.

Date

Model

Serial No.

Total Estimated Price

Sales Person

Contact Phone No.

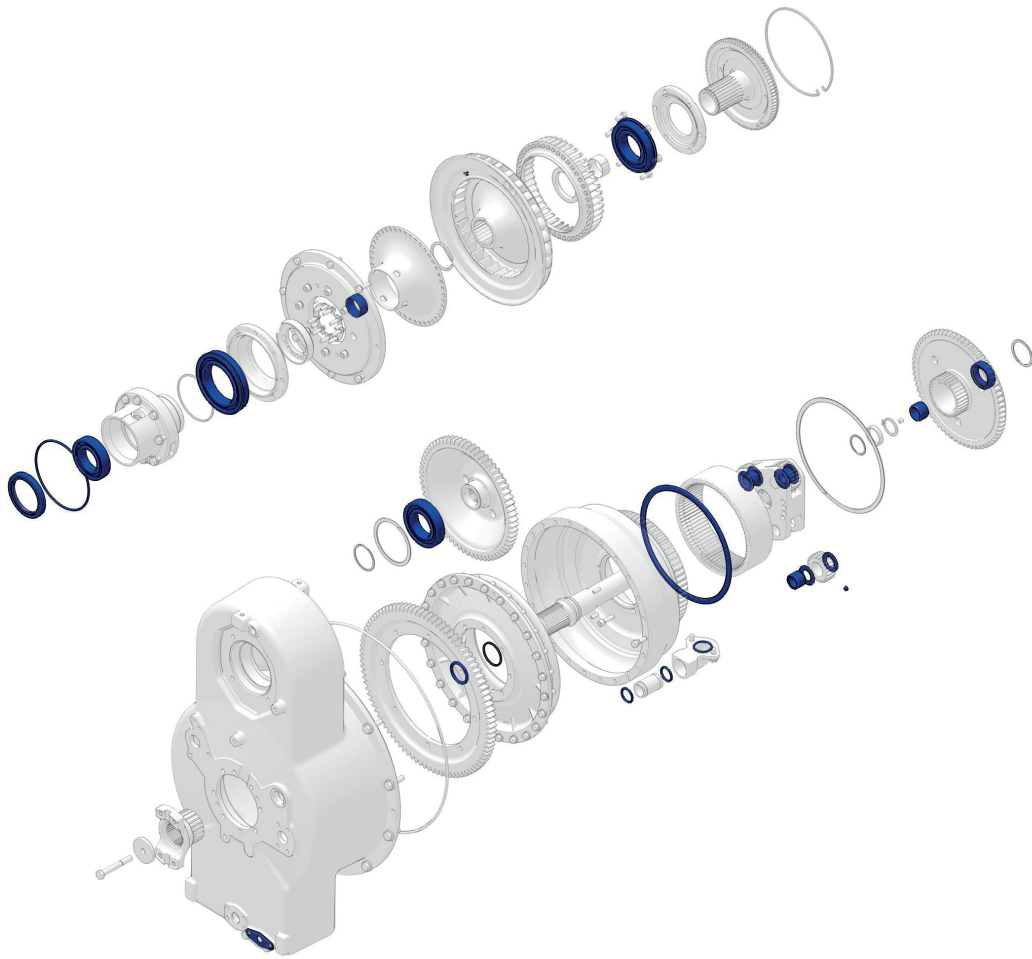
Turn Around Time

(SMCS code 02A for Level 1, 02B for Level 2)

[www.macorpcat.com](http://www.macorpcat.com)

© 2015 Caterpillar • All Rights Reserved • Printed in USA  
CAT, CATERPILLAR, BUILT FOR IT, their respective logos, "Caterpillar Yellow," the "Power Edge" trade dress as well as corporate and product identity used herein, are trademarks of Caterpillar and may not be used without permission.

**MACORP** **CAT**



[www.macorpcat.com](http://www.macorpcat.com)

© 2015 Caterpillar • All Rights Reserved • Printed in USA

CAT, CATERPILLAR, BUILT FOR IT, their respective logos, "Caterpillar Yellow," the "Power Edge" trade dress as well as corporate and product identity used herein, are trademarks of Caterpillar and may not be used without permission.

