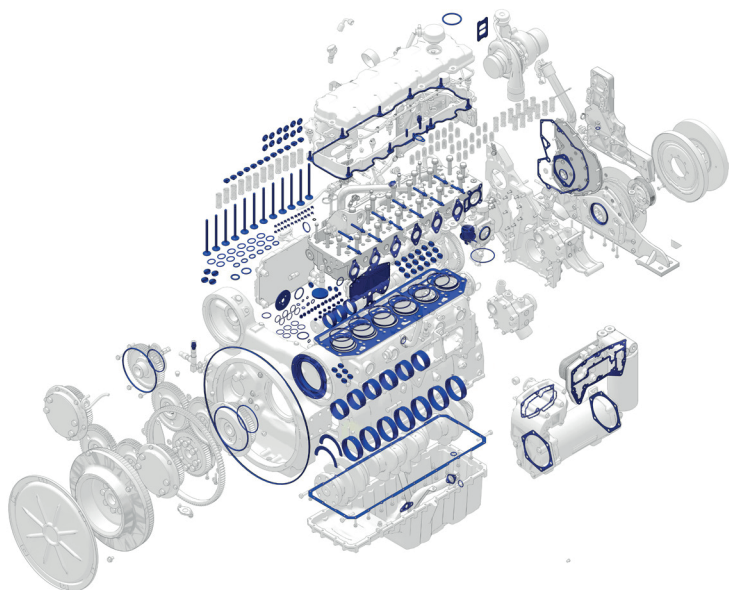


D6T C9 Engine Repair Options



Level 1 Reseal Rebearing

- >> Extends life of the engine before failure
- >> Reduces oil consumption/smoke
- >> Improves starting ability
- >> Restores power
- >> Restores fuel consumption level

\$

Warranty	_____
Customer Name	_____
Contact Phone No.	_____
Date	_____
Model	_____
Serial No.	_____
Total Estimated Price	_____
Sales Person	_____
Contact Phone No.	_____
Turn Around Time	_____

(SMCS code 02A for Level 1, 02B for Level 2)

INCLUDES

NEW PARTS INSTALLED

- Camshaft bearings
- Coolant temperature regulator
- Crankshaft thrust plates
- Exhaust manifold studs/locknuts
- Freeze plugs
- Gaskets & seals
- Main bearings & rod bearings
- Piston rings
- PM Service -oil, fuel and air filters
- Turbocharger (mounting) studs/locknuts
- Valve spring lock retainers, valve rotocoils & exhaust valves

INSPECT OR TEST

- Camshaft
- Connecting Rods
- Cooling system
 - Cooling fan
 - Radiator
 - Coolant hoses
 - Water Pump
- Crankshaft
- Cylinder block
- Engine mounts
- Engine oil cooler
- Engine oil pump
- Exhaust & intake manifolds
- Fan drive, pulleys, belts & belt tensioner
- Flywheel & ring gear
- Front gear train
- Fuel injectors
- Fuel transfer pump & fuel lines
- Fumes disposal & clamps
- Liner protrusion & condition
- Piston spray jets
- Pushrods, lifters & spring guides
- Rocker arm assemblies
 - Intake & Exhaust
 - Rocker arm Shaft
- Turbocharger , aftercooler / hoses & clamps
- Unit injection hydraulic pump
- Valve springs, intake valves, seats & guides
- Vibration damper
- Wiring harnesses, switches & sensors

SERVICES PERFORMED

Operational test to include:

- Fill lube system by pressurizing the engine oil passages with 15/40 wt oil
- Steam clean engine



www.macorpcat.com

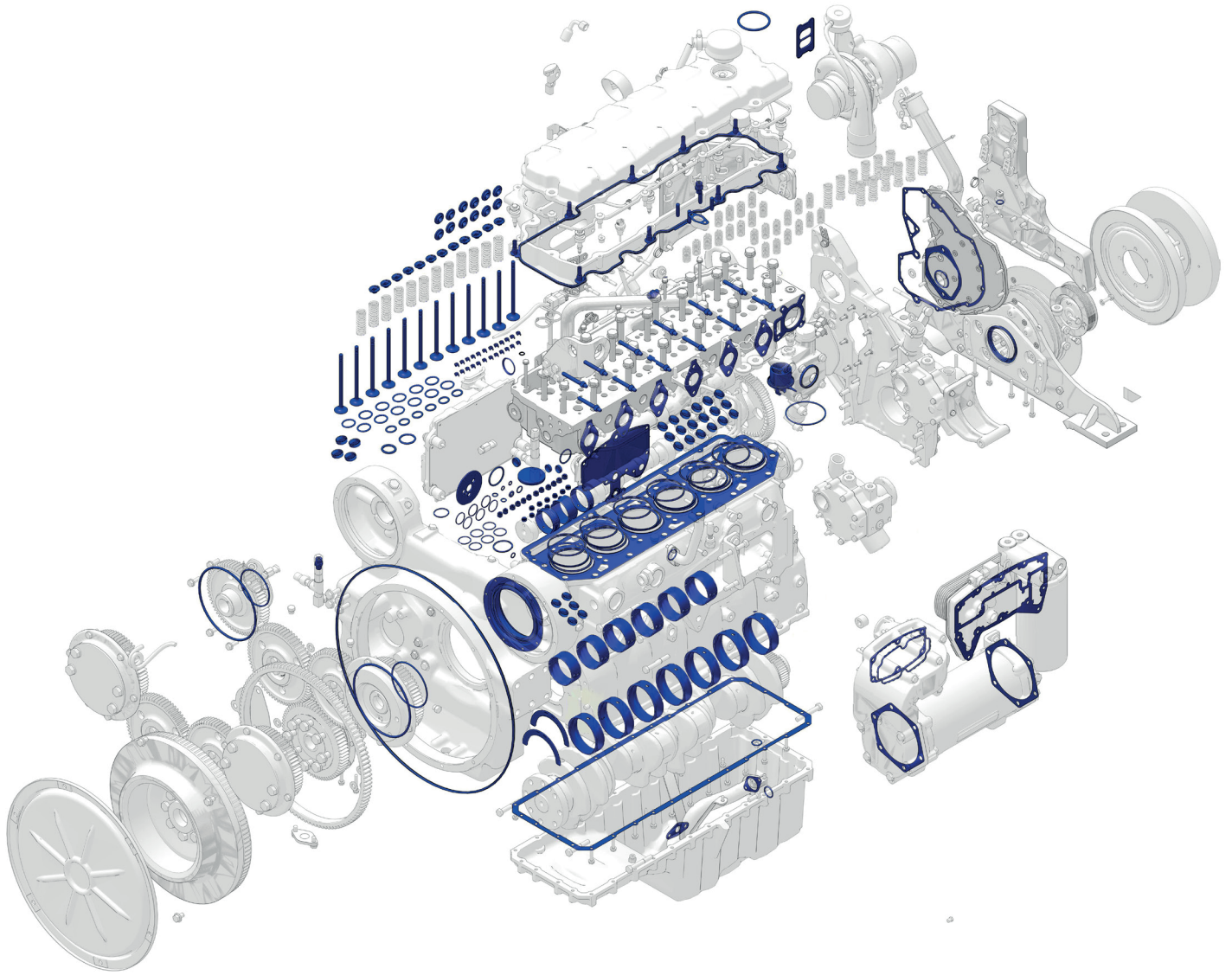
D6T C9 Engine Repair Options

RECOMMENDED LEVEL 2 ADD-ONS - Install Reconditioned or Cat Remanufacturing		Estimated Charge
Cylinder head - excludes Level 1 parts	Dealer Rebuild or Reman	\$
Cylinder Pack Assemblies	Dealer Rebuild or Reman	\$
Oil pump*	Dealer Rebuild or Reman	\$
Water pump*	L1-Reseal and Rebearing L2-Reman	\$
Fuel Injectors	Reman or New	\$
Fuel Transfer Pump	Reman or New	\$
Coolant Hoses and Accessory Belts*	New	\$
Turbocharger	Dealer Rebuild or Reman	\$
Unit Injection hydraulic pump	Reman or New	\$
Dyno Test Engine		\$
Engine Painted		\$

* highly recommended

ADDITIONAL CHARGES - Quoted after inspection	Description
Engine removal and installation	
Air condition compressor repairs	
Hydraulic pump repairs	
Electrical repairs	
Radiator, engine/hydraulic oil cooler, aftercooler repairs	
Hoses, Belts and Lines	
Oil pump parts other than bearings, seals and gaskets	
Reconditioning inspected major wear parts that do not meet reuse and salvage guidelines	Eg. Crankshaft, camshaft, rocker assembly, valve guides, etc.
Damaged castings	Cylinder block, cylinder head, fuel pump housing, front cover, rear housing, flywheel housing, flywheel, oil pan)
Damaged remanufactured cores or Non-Cat cores	
Electrical repairs	
Engine mounts	
Exhaust heat shields	
Exhaust & intake manifolds	
Fan drive	
Front gear train	
Starter & alternator	
Wiring harnesses	
Pulley(s) & vibration damper	
Transmission & hydraulic oil cooler	
Machine work	

BUILT FOR IT.™



© 2015 Caterpillar • All Rights Reserved • Printed in USA

CAT, CATERPILLAR, BUILT FOR IT, their respective logos, "Caterpillar Yellow," the "Power Edge" trade dress as well as corporate and product identity used herein, are trademarks of Caterpillar and may not be used without permission.



www.macorpcat.com