

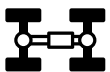


LONGER LIFE. LOWER COST.

**ENGINE & POWERTRAIN
REBUILD OPTION COVERAGE**



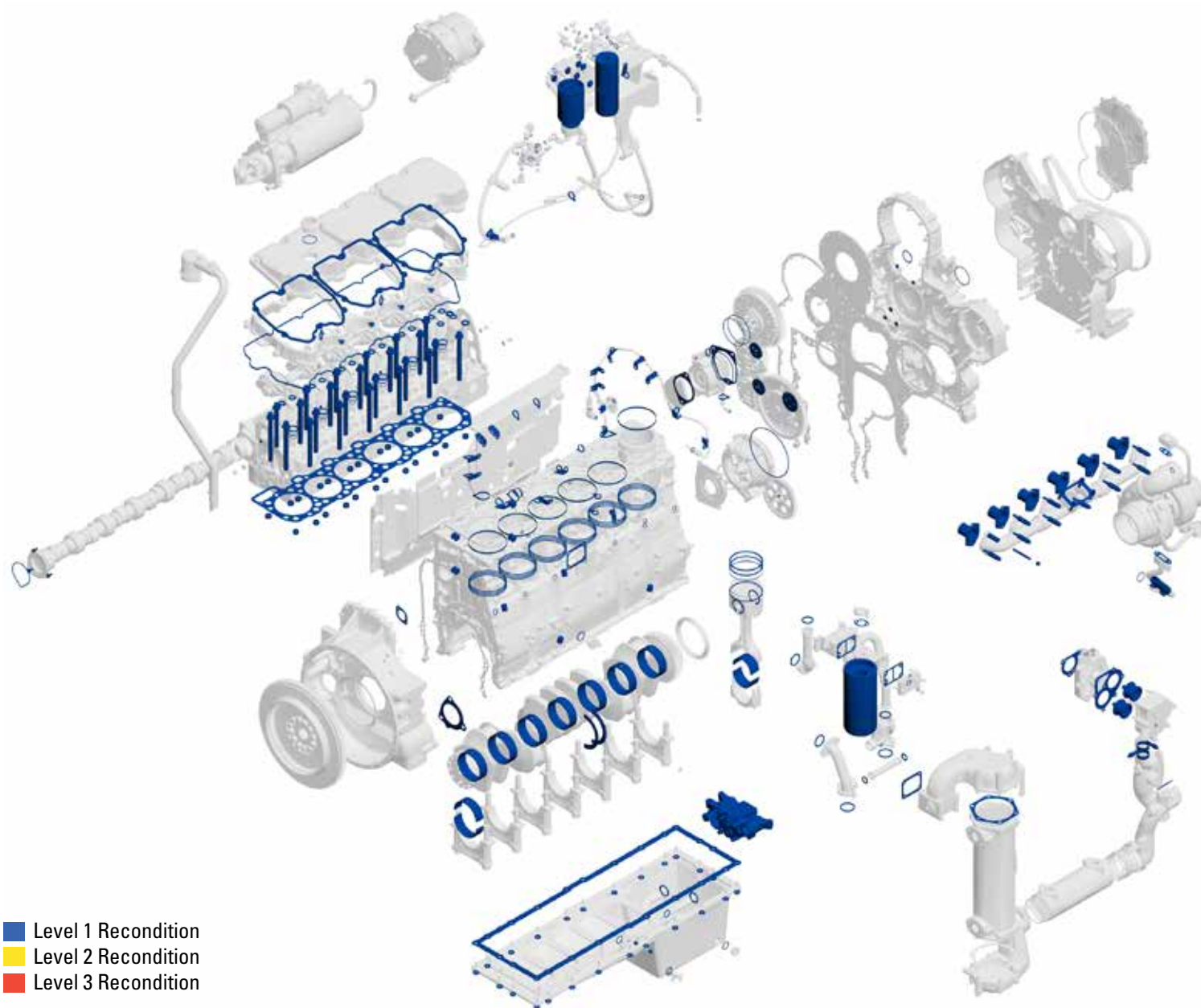
ENGINE



POWERTRAIN

BUILT FOR IT.™

MACORP **CAT**



- Level 1 Recondition
- Level 2 Recondition
- Level 3 Recondition

INCLUDES

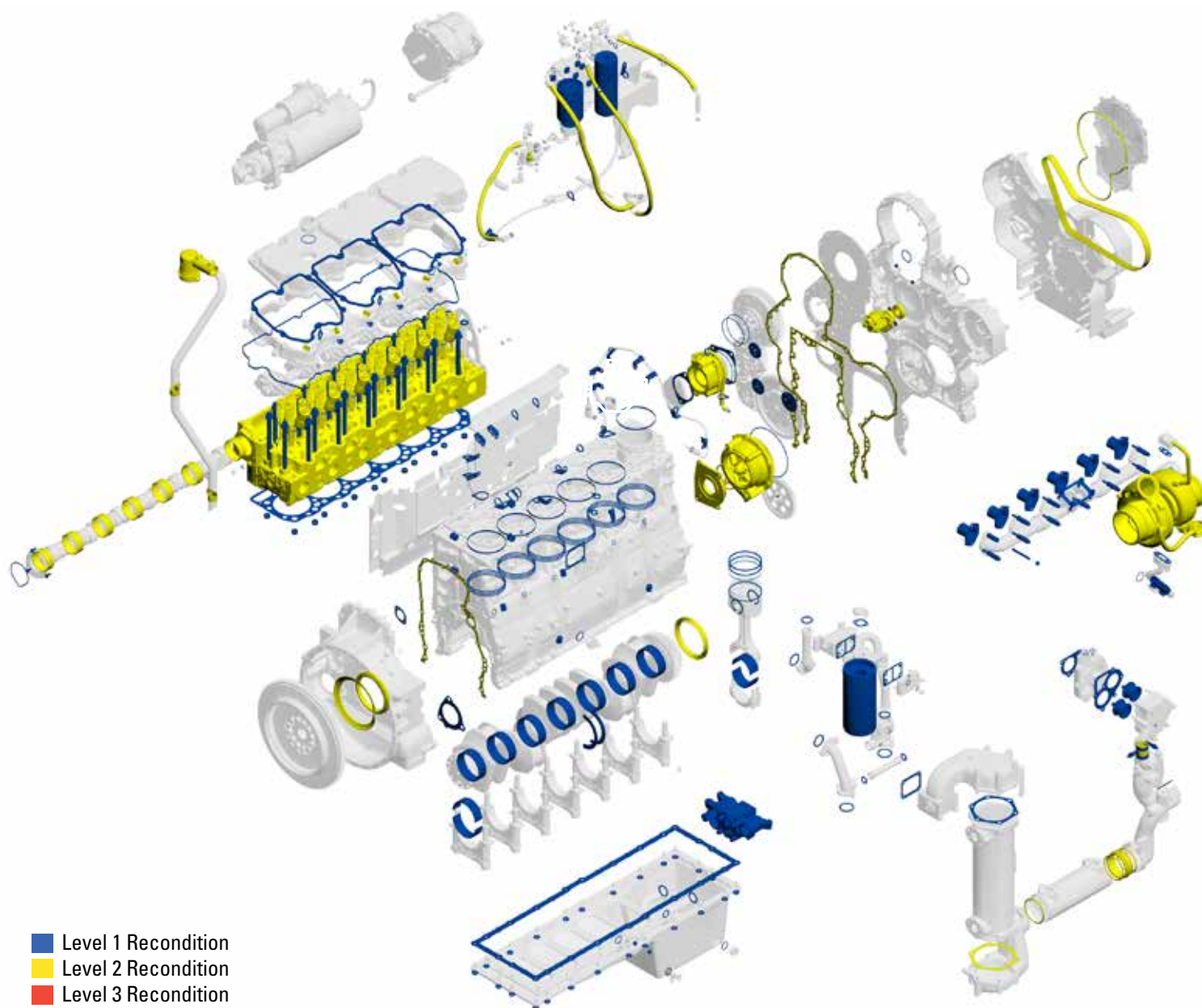
PARTS/SERVICES PERFORMED

- Coolant temperature regulator
- Crankshaft thrust plates
- Exhaust manifold studs/locknuts & exhaust sleeves
- Gaskets & seals
- Main bearings & rod bearings
- Recondition or replace oil pump
- Replace piston rings
- Turbocharger (mounting) studs/locknuts
- Liner seals
- Engine oil filter and fuel filters
- Paint

INSPECT

- Camshaft
- Connecting rods
- Coolant system
 - Coolant hoses - water pump - visual
- Crankshaft
- Cylinder block
- Engine mounts
- Exhaust & intake manifolds
- Fan drive, pulleys, belts & belt tensioner
- Flywheel & ring gear
- Fuel transfer pump & fuel lines
- Fumes disposal & clamps
- Cylinder liners

- Liner protrusion
- Piston spray jets
- Rocker arm assemblies
 - Intake & exhaust
 - Rocker arm shaft
 - Unit injector
- Starter and alternator - visual
- Turbocharger, after cooler/hoses & clamps
- Valve springs, intake valves, seats & guides
- Vibration damper
- Wiring harnesses, switches & sensors
- Cylinder head
- Fuel injector
- Water pump



- Level 1 Recondition
- Level 2 Recondition
- Level 3 Recondition

INCLUDES

PARTS/SERVICES PERFORMED INCLUDES

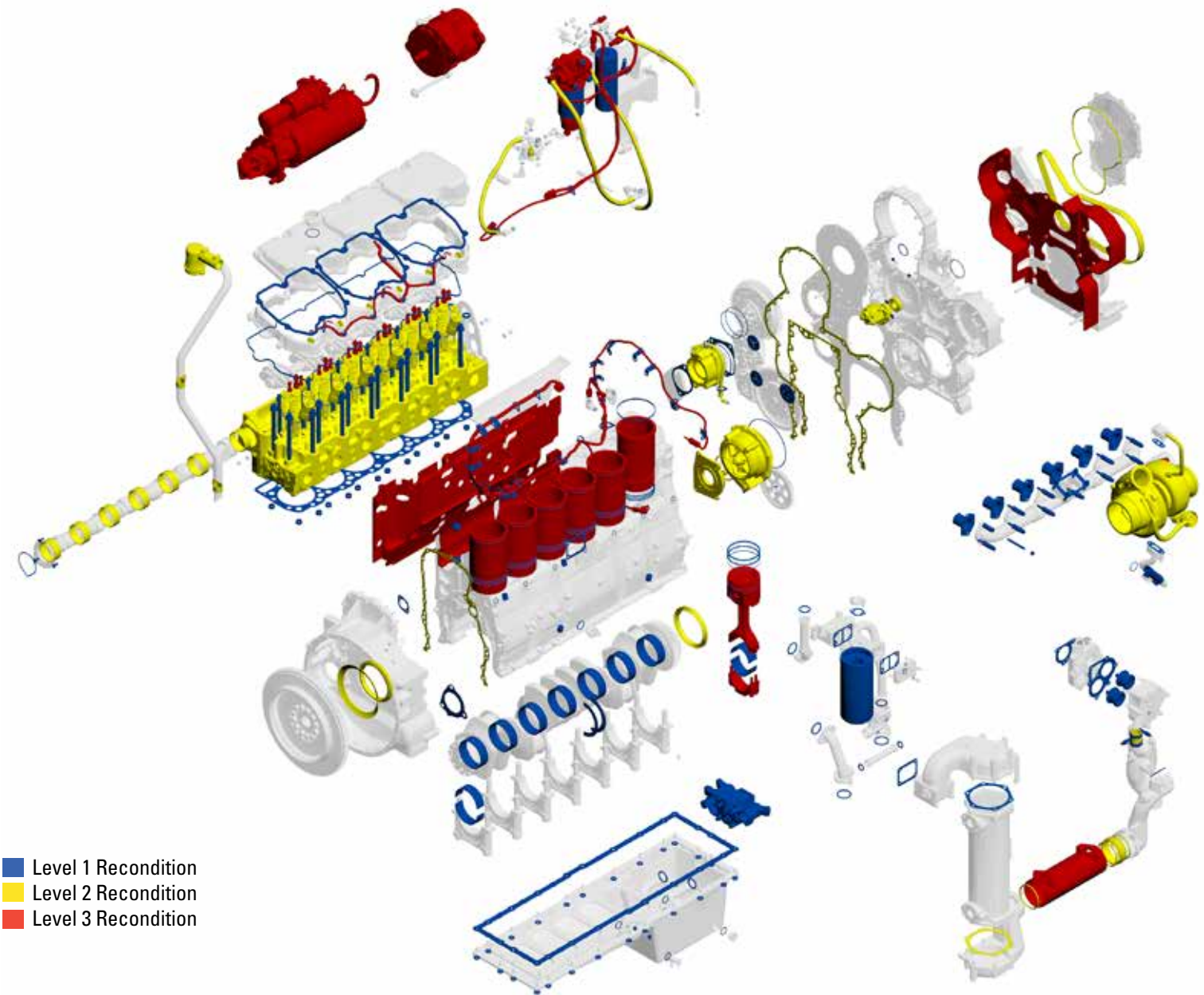
LEVEL 1 RECON PLUS:

- Accy drive bearing group
- Replace engine breather
- Replace serpentine belt, turbo coolant hoses, turbo oil hoses and fuel hoses integral to engine for filters/housing
- Replace fuel injectors with Cat Reman
- Recondition or replace fuel transfer pump
- Recondition or replace water pump
- Recondition or replace turbo
- Dyno test engine
- Camshaft bearings
- Recondition or replace cylinder head

INSPECT

- Camshaft
- Connecting rods
- Crankshaft
- Cylinder block
- Engine mounts
- Exhaust & intake manifolds
- Fan drive, pulleys, belts & belt tensioner
- Flywheel & ring gear
- Front gear train/Rear gear train
- Fuel lines
- Coolant hoses
- Cylinder liners

- Liner protrusion & condition
- Piston spray jets
- Rocker arm assemblies
 - Intake & exhaust
 - Rocker arm shaft
 - Unit injector
- Starter and alternator
- Valve springs, seats, guides and intake valves
- Vibration damper
- Wiring harnesses, switches & sensors
- After cooler
- Starter and alternator - visual



- Level 1 Recondition
- Level 2 Recondition
- Level 3 Recondition

INCLUDES

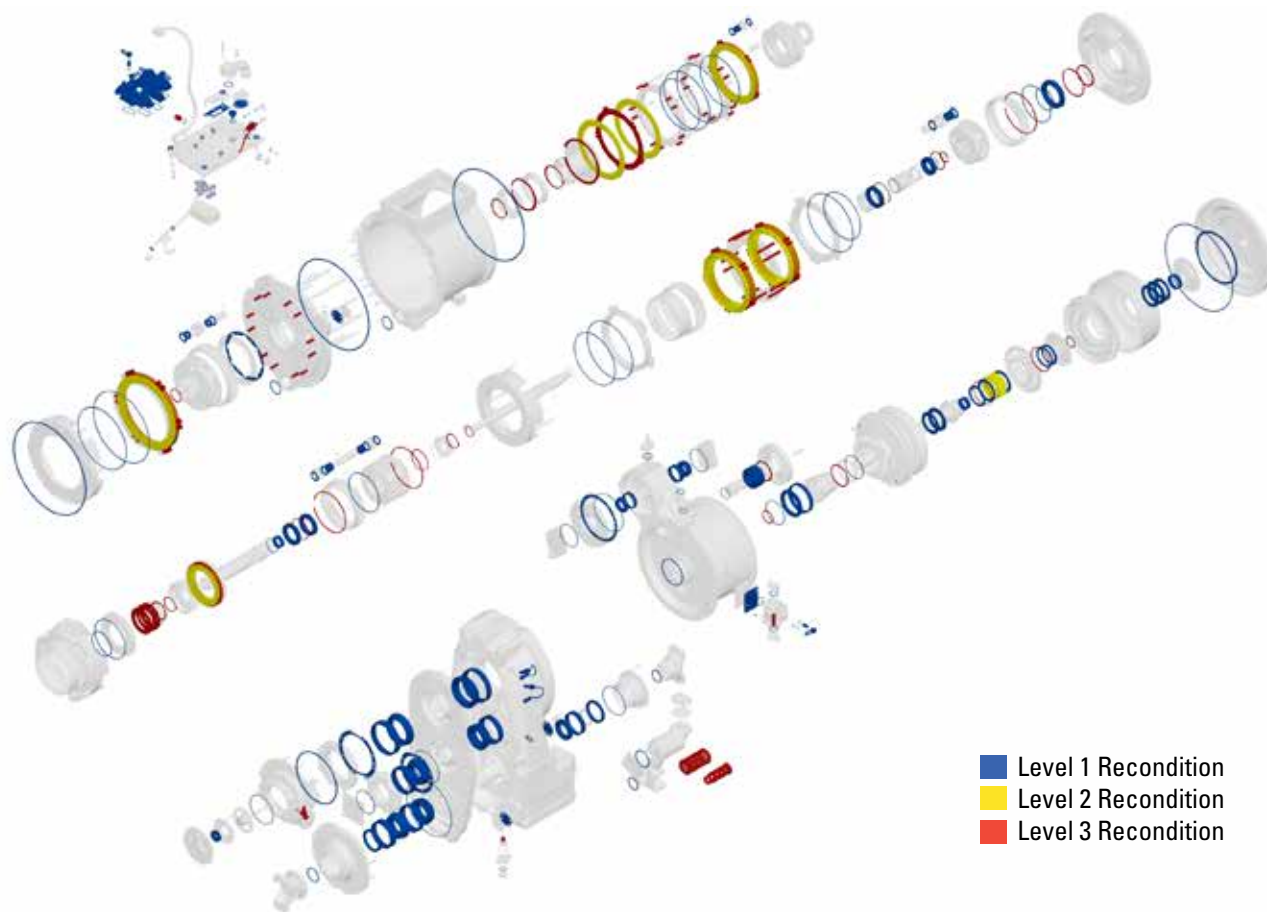
PARTS/SERVICES PERFORMED INCLUDES LEVEL 1 & 2 RECON PLUS:

- Integral engine harness
- Engine related sensors, switches and fuel prime pump
- Replace engine oil cooler with Reman
- Includes recondition or replacement of unknown hard parts found during disassembly that do not meet Cat reuse guidelines. Excludes major castings (engine block, crankshaft, front housing and rear housing)

- Recondition/replace fuel injection pump
- Rocker arm adjustment screws/nuts
- Piston spray jet bolts
- Engine mounts
- Sound suppression on block/front cover
- Piston spray jet
- Alternator
- Starter
- Cylinder packs (piston, rod, liner)

INSPECT

- Camshaft
- Crankshaft
- Exhaust & intake manifolds
- Fan drive, pulleys, belts & belt tensioner
- Flywheel & ring gear
- Front gear train/Rear gear train
- Fuel lines
- Power train cooler
- Liner protrusion & condition
- Rocker arm assemblies
- Intake & exhaust manifolds
- Rocker arm shaft
- Vibration damper
- Cylinder block
- Coolant hoses
- After cooler



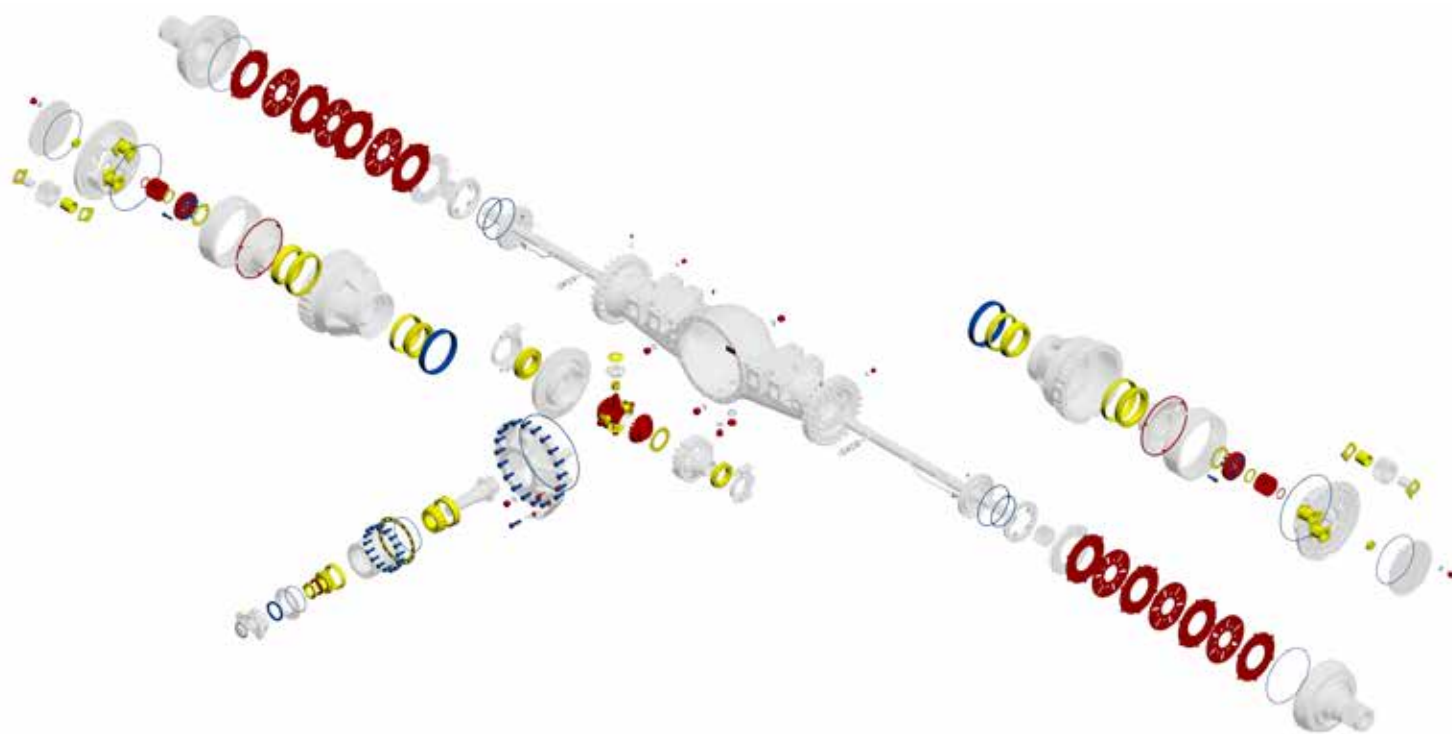
- Level 1 Recondition
- Level 2 Recondition
- Level 3 Recondition

INCLUDES

PARTS REPLACED	LEVEL 1	LEVEL 2	LEVEL 3
All bearings and races	X	X	X
All seals including control valve	X	X	X
Paint component	X	X	X
Clutch friction discs		X	X
Modulation valves	X	X	X
Shim packs	X	X	X
Side thrust plates	X	X	X
Thrust plate retainers	X	X	X
Outlet relief spring	X	X	X
Clutch plates			X
Magnetic tube			X
Clutch and valve springs			X
Suction screen			X
Freewheel cam		X	X
Sensors/switches	X	X	X
Retaining ring			X
Thrust disc/plates	X	X	X
Test (transmission)	X	X	X

INSPECT OR TEST

- Inspect for applicable updates
- Clutch friction disc and plates inspected compared to Cat reuse guidelines
- All internal components inspected compared to Cat reuse guidelines
- Visually inspect harness, hoses
- Dyno-test transmission to ensure clutch actuation pressures and valve modulation are within specification



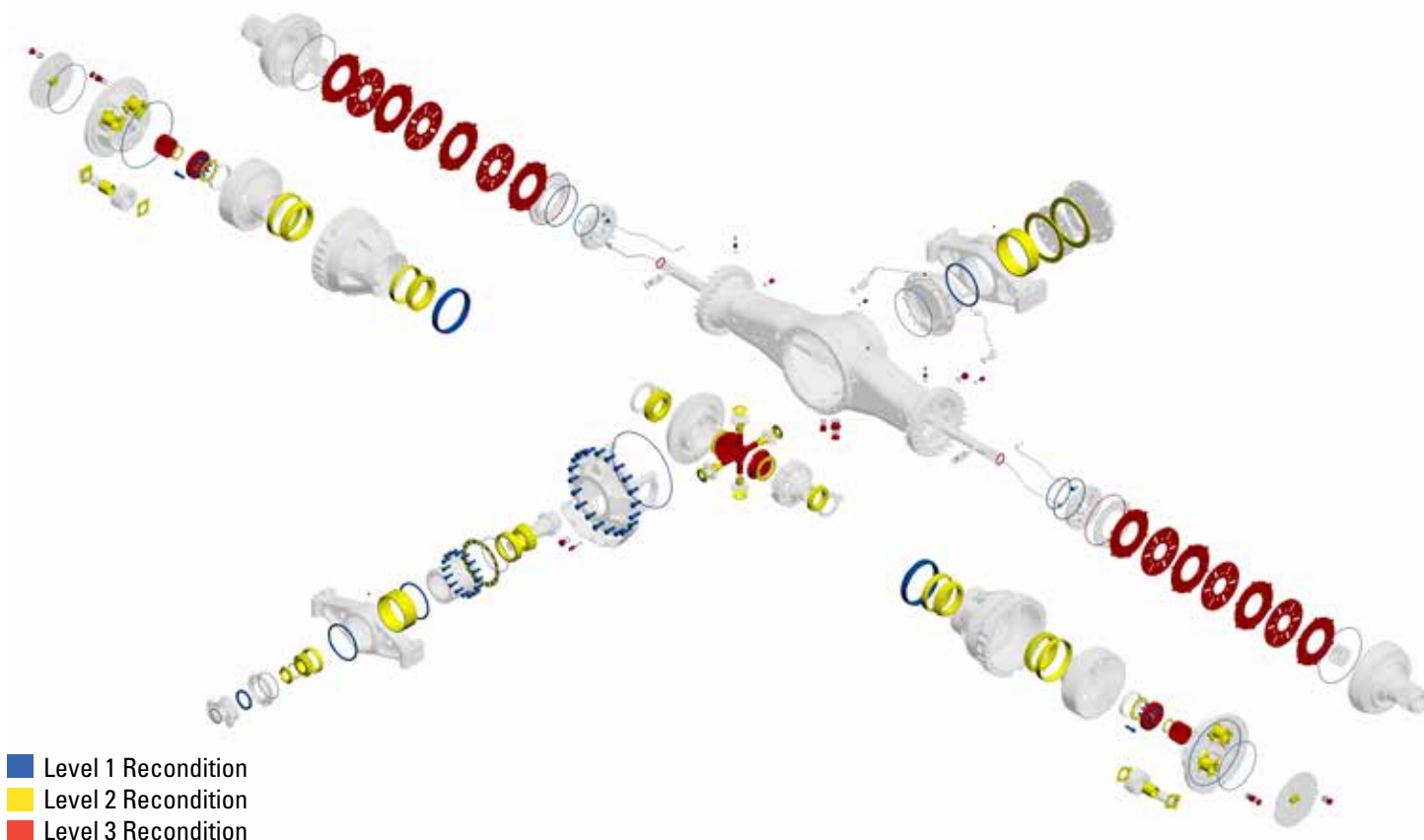
- Level 1 Recondition
- Level 2 Recondition
- Level 3 Recondition

INCLUDES

PARTS REPLACED	LEVEL 1	LEVEL 2	LEVEL 3
All bearings and races		X	X
All seals and gaskets	X	X	X
Shim pack		X	X
Paint component	X	X	X
Brake discs and plates replaced that do not meet Cat reuse guidelines			X
Locknut - pinion shaft		X	X
Drain & fill plugs			X
Final drive sun gears			X
Differential spider assembly			X
Retaining rings			X
Differential mounting bolts	X	X	X
Final drive wheel hub retaining bolts	X	X	X
Pinion retaining bolts	X	X	X

INSPECT OR TEST

- Inspect for applicable updates
- Brake friction disc and plates inspected compared to Cat reuse guidelines
- Perform visual check on
 - Spindles
 - Wheels
- Pressure test brakes
- Check for rotation and differential lock function **if applicable**
- Brake Disc, gears inspected and compared to Cat reuse guidelines



INCLUDES

PARTS REPLACED	LEVEL 1	LEVEL 2	LEVEL 3
All bearings and races		X	X
All seals and gaskets	X	X	X
Shim pack		X	X
Paint component	X	X	X
Brake discs and plates replaced that do not meet Cat reuse guidelines			X
Locknut - pinion shaft		X	X
Drain & fill plugs			X
Final drive sun gears			X
Differential spider assembly			X
Retaining rings			X
Pinion retaining bolts	X	X	X
Differential mounting bolts	X	X	X
Final drive wheel hub retaining bolts	X	X	X

INSPECT OR TEST

- Inspect for applicable updates
- Brake friction disc and plates inspected compared to Cat reuse guidelines
- Perform additional visual check on
 - Spindles
 - Wheels
- Pressure test brakes
- Check for rotation and differential lock function **if applicable**
- Brake disc, gears inspected and compared to Cat reuse guidelines

BUILT FOR IT.