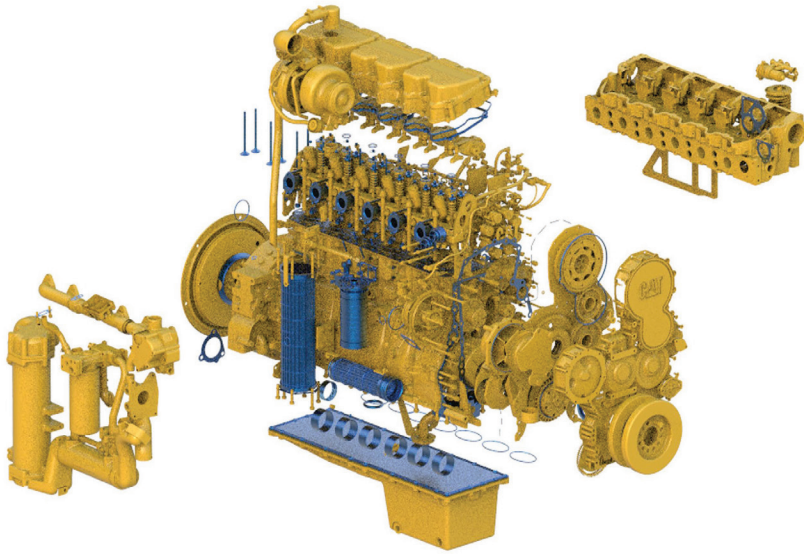


320D C6.4 Engine Repair Options



Level 1 Reseal Rebearing

- >> Extends life of the engine before failure
- >> Reduces oil consumption/smoke
- >> Improves starting ability
- >> Restores power
- >> Restores fuel consumption level

\$

Warranty _____

Customer Name _____

Contact Phone No. _____

Date _____

Model _____

Serial No. _____

Total Estimated Price _____

Sales Person _____

Contact Phone No. _____

Turn Around Time _____

(SMCS code 02A for Level 1, 02B for Level 2)

INCLUDES

NEW PARTS INSTALLED

- Camshaft bearings
- Crankshaft thrust plates
- Exhaust manifold studs/locknuts
- Freeze plugs
- Gaskets & seals
- Main & rod bearings
- Serpentine belt
- PM Service - oil filter
- Inlet & exhaust valves

INSPECT OR TEST

- Camshaft
- Connecting Rods
- Cooling system
 - Cooling fan
 - Radiator
 - Coolant hoses
 - Water Pump
- Crankshaft
- Cylinder block & bore condition
- Engine mounts
- Engine oil cooler
- Exhaust & intake manifolds
- Fan drive, pulleys, belts & belt tensioner
- Flywheel & ring gear
- Front gear train
- Fuel injection pump & lines
- Fuel injectors
- Fumes disposal & clamps
- Integral oil pump
- Piston spray jets
- Pushrods & tappets
- Rocker arm assemblies
 - Intake & Exhaust
 - Rocker arm Shaft
- Turbocharger , aftercooler / hoses & clamps
- Valve springs, seats & guides
- Vibration damper
- Wiring harnesses, switches & sensors

MACORP **CAT**

www.macorpcat.com

320D C6.4 Engine Repair Options

BASIC REPAIR ADD-ONS		*after Estimated Charge
Pistons	New	\$
Water pump	Reman	\$
Fuel Injectors	Reman	\$
Fuel Injection Pump	Reman	\$
Oil Pump	New	\$
Turbocharger	New	\$
Oil Cooler	Reman	\$

* Estimated Charge for defined scope of work valid until date specified.

ADDITIONAL CHARGES - Quoted after inspection	Description
Engine removal and installation	
Air condition compressor repairs	
Hydraulic pump repairs	
Electrical repairs	
Radiator, engine/hydraulic oil cooler, aftercooler repairs	
Hoses, Belts and Lines	
Integral oil pump parts other than bearings, seals and gaskets	
Reconditioning inspected major wear parts that do not meet reuse and salvage guidelines	Eg. Crankshaft, camshaft, rocker assembly, valve guides, etc.
Damaged castings	Cylinder block, cylinder head, front cover, rear housing, flywheel housing, flywheel, oil pan)
Damaged remanufactured cores or Non-Cat cores	
Electrical repairs	
Engine mounts	
Exhaust heat shields	
Exhaust & intake manifolds	
Fan drive	
Front gear train	
Starter & alternator	
Wiring harnesses	
Pulley(s) & vibration damper	
Transmission & hydraulic oil cooler	
Machine work	

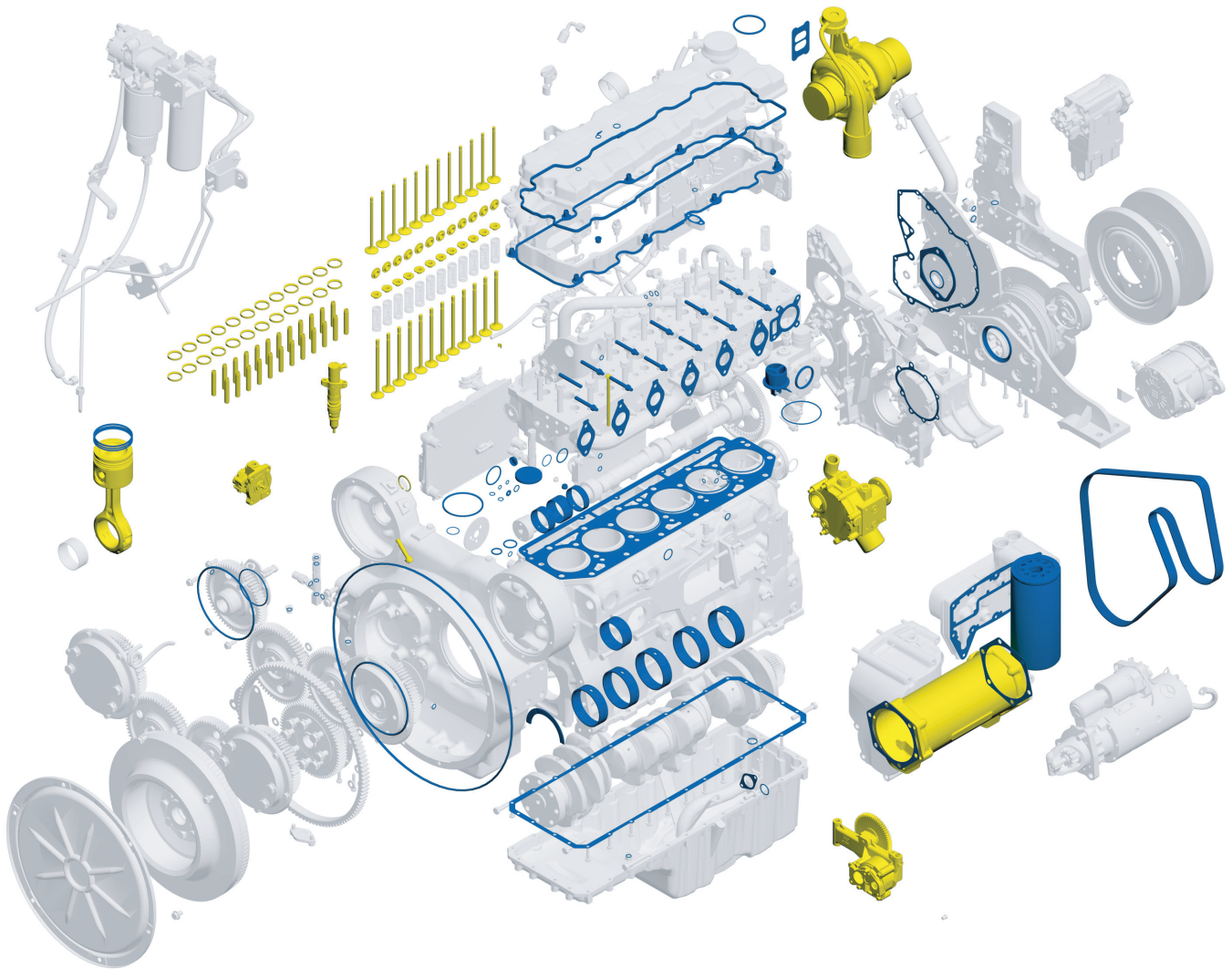
BUILT FOR IT.™

www.cat.com

© 2017 Caterpillar • All Rights Reserved • Printed in USA
CAT, CATERPILLAR, BUILT FOR IT, their respective logos, "Caterpillar Yellow," the "Power Edge" trade dress as well as corporate and product identity used herein, are trademarks of Caterpillar and may not be used without permission.



www.macorpcat.com



- Basic Repair
- Basic Repair Plus