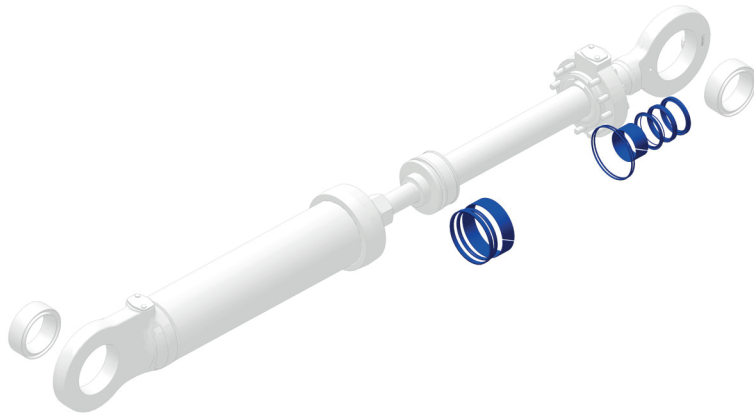


Hydraulic Cylinder Repair Options



PLANNED/PROBLEM INDICATORS

- Slow hydraulic performance or increased cycle times
- Cylinder drift
- Head and/or rod seal oil leakage
- Machine down for other work

PART OR SERVICE INCLUDED

- Disassembly of cylinder
- Cleaning of cylinder components
- Cylinder bore light hone to remove rust, scratches and/ or cylinder distortions
- Thorough washing of cylinder tube to remove contaminants generated during light honing
- Replacement of all cylinder piston and head seals
- Properly torque piston rod nut or bolt(s)
- Reassemble cylinder
- Pressure test cylinder

INSPECTION POINTS

- Bearings (Eye and/or trunnion bushings)
- Rod and rod eye
- Interior walls of cylinder
- Threads
- Piston
- Piston nut or bolt(s)
- Head

\$

BUILT FOR IT.

LEVEL 2 (Salvage or Replace) - QUOTED AFTER INSPECTION	ESTIMATED PRICE
Bearings (Eye and/or trunnion bushings)	\$
Rod Reconditioning (Re-Rod, Straighten, chrome, AST, polish, etc).	\$
Rod Assembly (New or Reman)	\$
Re-Tube	\$
Cylinder Tube Assembly (New or Reman)	\$
Piston	\$
Piston nut or bolt(s)	\$

Warranty

Customer Name

Contact Phone No.

Date

Model

Serial No.

Cylinder Group Part Number

Total Estimated Price

Sales Person

Contact Phone No.

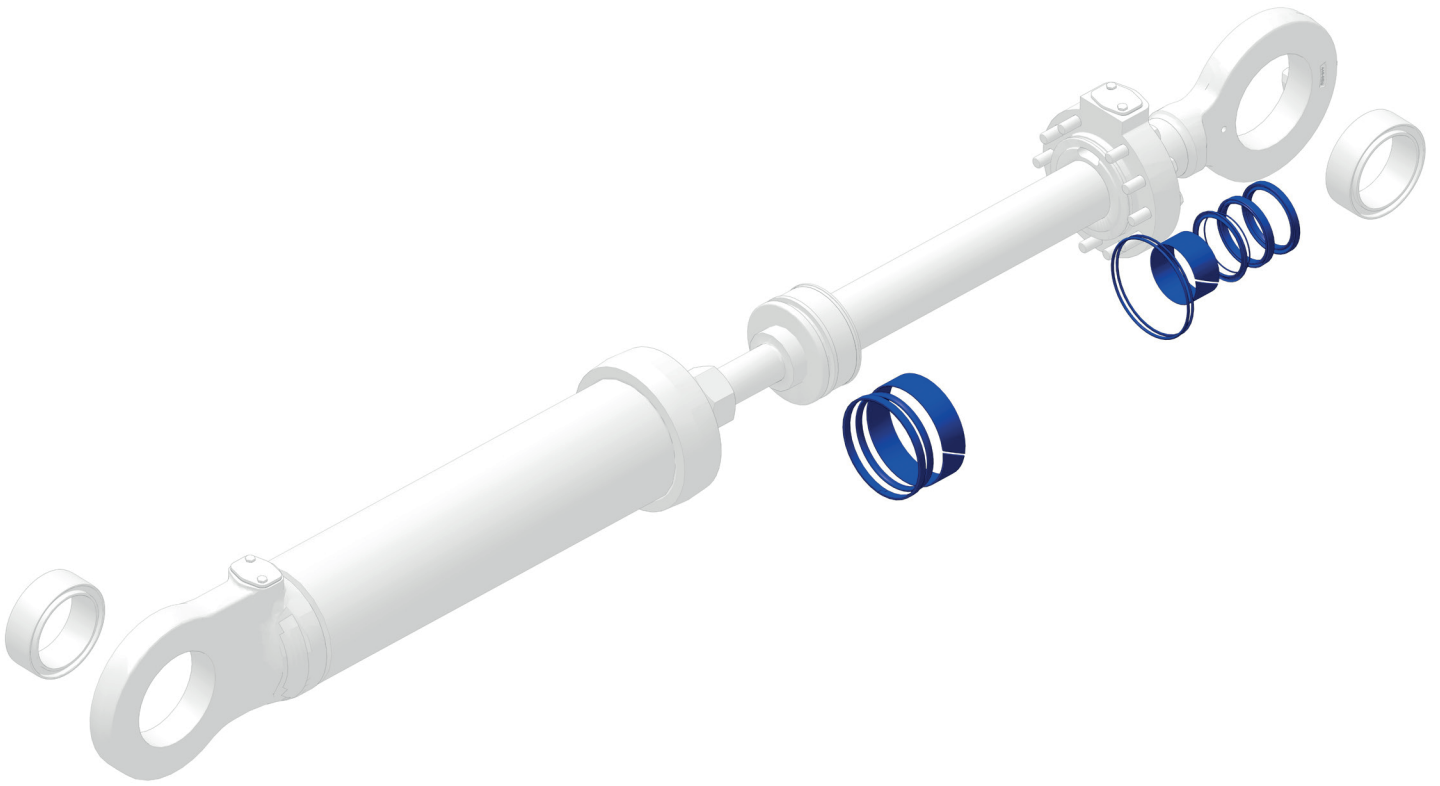
Turn Around Time

(SMCS code 02A for Level 1, 02B for Level 2)

www.macorpcat.com

© 2016 Caterpillar • All Rights Reserved • Printed in USA
CAT, CATERPILLAR, BUILT FOR IT, their respective logos, "Caterpillar Yellow," the "Power Edge" trade dress as well as corporate and product identity used herein, are trademarks of Caterpillar and may not be used without permission.





www.macorpcat.com

© 2016 Caterpillar • All Rights Reserved • Printed in USA
CAT, CATERPILLAR, BUILT FOR IT, their respective logos, "Caterpillar Yellow," the "Power Edge" trade dress as well as corporate and product identity used herein, are trademarks of Caterpillar and may not be used without permission.

