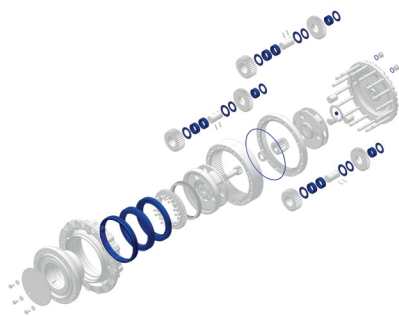


# 320C/320D Final Drive Repair Options



## PLANNED/PROBLEM INDICATORS

- Component hours
- Final Drive oil leak
- S•O•S<sup>SM</sup> Report
- Noise or vibration
- Magnetic plug inspection
- Machine down for other work

## INCLUDES NEW PARTS INSTALLED

- All bushings and anti-friction bearings
- All seals and gaskets
- Thrust washers
- Duo-Cone<sup>TM</sup> seal
- Miscellaneous hardware (as needed)
- Magnetic plug (if needed)

## Level 1 Rebearing/Reseal

- >> Provides new component life
- >> Guaranteed Price
- >> Reduces Costs
- >> Reduces Downtime

## INSPECT

- Gears
- Shafts
- Carrier
- Wheel spindle
- Operational test

\$

## BUILT FOR IT.

LEVEL 2 ADD-ONS - Salvage or Replace	Estimated Price
Planet shafts	\$
Planet gears	\$
Sun gear	\$
Ring gear	\$
Wheel spindle	\$
Planet carrier	\$
Case repairs	\$

Warranty

Customer Name

Contact Phone No.

Date

Model

Serial No.

Total Estimated Price

Sales Person

Contact Phone No.

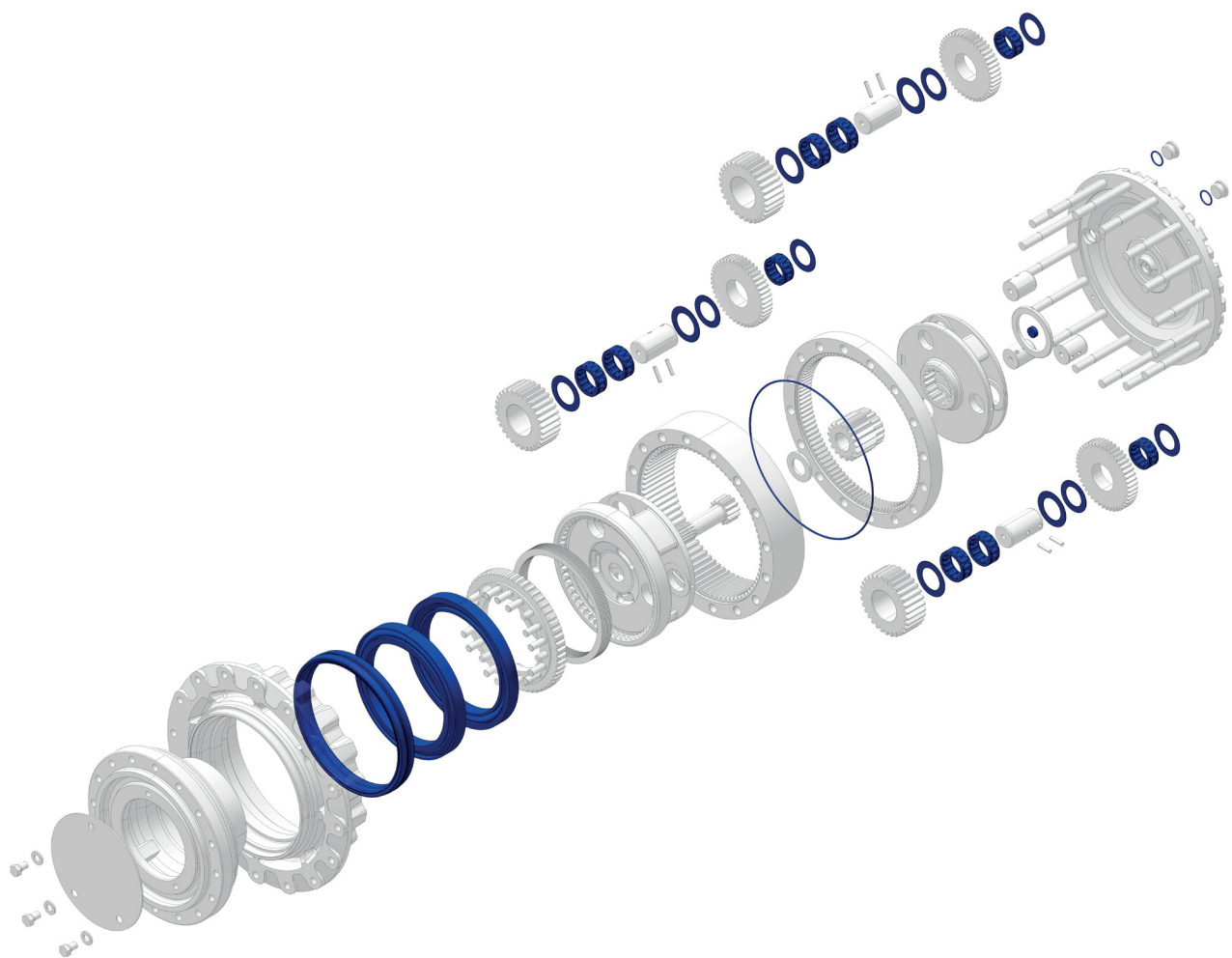
Turn Around Time

(SMCS code 02A for Level 1, 02B for Level 2)

[www.macorpcat.com](http://www.macorpcat.com)

© 2015 Caterpillar • All Rights Reserved • Printed in USA  
CAT, CATERPILLAR, BUILT FOR IT, their respective logos, "Caterpillar Yellow," the "Power Edge" trade dress as well as corporate and product identity used herein, are trademarks of Caterpillar and may not be used without permission.





[www.macorpcat.com](http://www.macorpcat.com)

© 2015 Caterpillar • All Rights Reserved • Printed in USA  
 CAT, CATERPILLAR, BUILT FOR IT, their respective logos, "Caterpillar Yellow," the "Power Edge" trade dress as well as corporate and product identity used herein, are trademarks of Caterpillar and may not be used without permission.

